



Camp Bauercrest 2010 Community Handbook



In Season:
17 Old County Road
Amesbury, MA 01913
Telephone: (978) 388-4732
Fax: (978) 388-0303

During the Winter:
Rob Brockman
Executive Director
Camp Bauercrest
20 Normandy Drive
Sudbury, MA 01776
Telephone: (978) 443-0582
Fax: (978) 443-0540

Revised June, 2010

Table of Contents

I. MISSION STATEMENT	3
II. COMMUNICATION	3
A. Written Communication from Campers.....	3
B. Phone Calls.....	4
C. Electronic Communication.....	4
D. Communication from Staff and Administration	4
E. Parents Having a Concern during the Camp Season	5
F. Inquiries and Grievances.....	5
III. EMERGENCY CONTACT NOTIFICATION.....	5
IV. Bauercrest Camp Life and Programming	7
A. Age Groups and Bunk Assignments	7
B. Specialty Programs and Eligibility	8
C. Daily Schedule	9
V. TECHNOLOGY POLICY	10
A. Goal.....	10
B. Restricted Items.....	10
C. Consequences.....	10
D. Camp Website.....	10
VI. OFFICE HOURS AND CONTACT INFORMATION.....	11
A. Office Hours.....	11
B. Camp Contact Information.....	11
VII. CAMP DATES AND BUNK ASSIGNMENTS.....	12
A. 2010 Dates and Rates	12
B. Arrival at Camp on Opening Day.....	12
C. Opening Day for Counselor Interns (CI's) and Waiters.....	13
D. Bunk Assignments	14
VIII. VISITING POLICY.....	14
A. Parent Visitation.....	14
B. Visiting Day (Sunday July 25, 2010)	14
C. Leaving Camp (other than Visiting Day)	15
IX. CLOSING DAY AND GRATUITIES	16
A. Closing Day.....	16
B. Gratuities	16
X. BUNK LIFE.....	16
A. Supplement Bunk Account and Personal Money.....	16
B. Discipline	17
XI. OTHER CAMP SERVICES	17
A. Bar Mitzvah and Academic Tutoring.....	17

B. Laundry.....	17
XII. PERSONAL ITEMS AND AREAS	18
A. Electronics.....	18
B. Other Personal Items	18
C. Furniture.....	18
XIII. FOOD	18
A. Peanut-Free and Tree Nut-Free Policy.....	18
B. Mess Hall.....	19
C. Care Packages and Bunk Food.....	19
D. Canteen.....	19
XIV. CAMPER HEALTH	20
A. Health Form	20
B. Pre-Camp Prevention and Notification	20
C. Preventative Health Care Procedures for Opening Day	20
D. Medications	20
D. Behavior, Special Needs and Modifications	21
E. Health Center	22
F. Insurance	22
G. Health Care Staff.....	22
H. Confidentiality.....	22
I. Medical Records	22
J. Over the Counter Medications	22
K. Dental and Orthodontic Care	22
XV. DIRECTIONS	23
XVI. CAMP BAUERCREST PACKING LIST.....	25

I. MISSION STATEMENT

Camp Bauercrest aims to build Jewish Identity and self-esteem in young boys through promoting and teaching the values of Sportsmanship, Teamwork, Achievement, and Responsibility – the STAR principles.

It is our mission to ensure that every Bauercrest camper:

- Has a healthy and enjoyable summer;
- Returns to his community more responsible and compassionate;
- Attains new skills and makes new friends;
- Leaves camp an emotionally and physically stronger person; and
- Establishes a stronger connection with Jewish culture, religion, or nationality

II. COMMUNICATION

We understand that attending camp can cause anxieties in your family; camp is inherently disruptive to your normal family pattern. We also acknowledge that effective communication is vital to everyone's success. The communication methods we've set up reflect the needs of our entire community.

A. Written Communication from Campers

Campers are expected to write two letters to their parents each week. Please send campers with pre-addressed and pre-stamped envelopes to make this process easier. Campers receive their mail on a daily basis. Please make sure to put the bunk number on all letters. **If you have not received any mail for more than one week, please contact the Camp by e-mailing Administration@Bauercrest.org or by calling the camp directly at (978) 388-4732.**

Sometimes parents receive a “negative letter” from their son. The “negative letter” you receive is typically three days old. Just like at home, kids have good days and bad days. As you know, in most instances, within a couple of hours or even a few minutes, whatever is bothering them is forgotten. Also, many campers in their first year are a little homesick. Counselors and the administrative staff are well aware of this situation and provide special attention to new and younger campers to help them through their homesickness. If you have any concerns, please feel free to email Administration@Bauercrest.org or call the camp directly. Note that we rarely have a child leave camp due to homesickness and that overcoming homesickness helps a child gain self confidence. We realize sending your son away to Camp can be a traumatic experience for the parents as well, but regularly contacting Camp to check on your son is unnecessary. If there is a problem, you will most certainly be notified. If your son is having a problem, it is preferred that you let the camp staff or administrators handle the problem. In the case of homesickness, parents communicating directly with their child will typically only exacerbate the homesickness.

B. Phone Calls

We feel that it is not in a child's best interest to communicate with family by phone. We prefer your child write home. Letter writing prepares campers to better process their thoughts and allows more time to reflect on camp life. The only exception to this policy is if your son has a birthday during camp. In this case, your son will call home on the day of his birthday between 5:30 pm and 9:30 pm (the call should not last more than a few minutes). If you are not reachable at your home phone number during that time, please e-mail or call the Camp the day before and we will find a time that is convenient for you and does not disrupt his schedule. Calling Camp to wish your son a Happy Birthday can be disruptive for your child and interrupt activities for him and his group, so we would appreciate if you could wait until you are called. No cell phones or pagers are allowed at camp.

C. Electronic Communication

Bauercrest will continue to partner with Bunk1.com, a company specializing in Summer Camp Internet Communications. To access Bunk1.com for the first time go into www.bauercrest.org then click on photo/email box on the left side of your screen. You will then see a sign-in screen. Press **register now** to enroll, which will allow you to gain access to the Bauercrest web page. Once in the registration page enter the **pre-approval** code which is **7093B1**. Then follow directions to complete the registration page. This sequence of steps is required only once in order to register.

Subsequent visits to the website through Bunk1.com will only require that you enter your username and password.

A feature of the Website is the ability to write letters to your child and send via e-mail. To do so, you may purchase blocks of e-mails at a cost of \$1.00 each. This service charge is assessed by Bunk1.com and not by the Camp to deliver your son's email. Bunk1.com charges are not included in camp fees and are the sole responsibility of the parents. This service can be purchased using a credit card on the Bunk1.com site. Campers will not have access to computer facilities throughout the week.

D. Communication from Staff and Administration

Parents of Junior age campers and below will receive email or written communication from counselors at each two-week block within a session - excluding the last two weeks of the camping season. Parents of Seniors, Waiters, and CIs will receive a minimum of one communication per 4 week session.

Administration from camp will publish a newsletter each week. An electronic version of the newsletter, or a link to online access, will be distributed to families.

E. Parents Having a Concern during the Camp Season

If a parent has a concern about his/her child, the following procedure should be followed: The parent should email Administration@Bauercrest.org. This method is preferable to calling, as it does not disrupt the ongoing programming. Administrative staff checks e-mail several times a day. If you prefer to call the camp at (978) 388-4732, we ask that you leave a message with a member of the office staff. Please provide as many details as necessary, so the staff person can do as much investigation as possible before a counselor or member of the Administrative team returns your call. The parent will receive a response from an administrator in a timely fashion (usually later that day, but most certainly within 24 hours).

F. Inquiries and Grievances

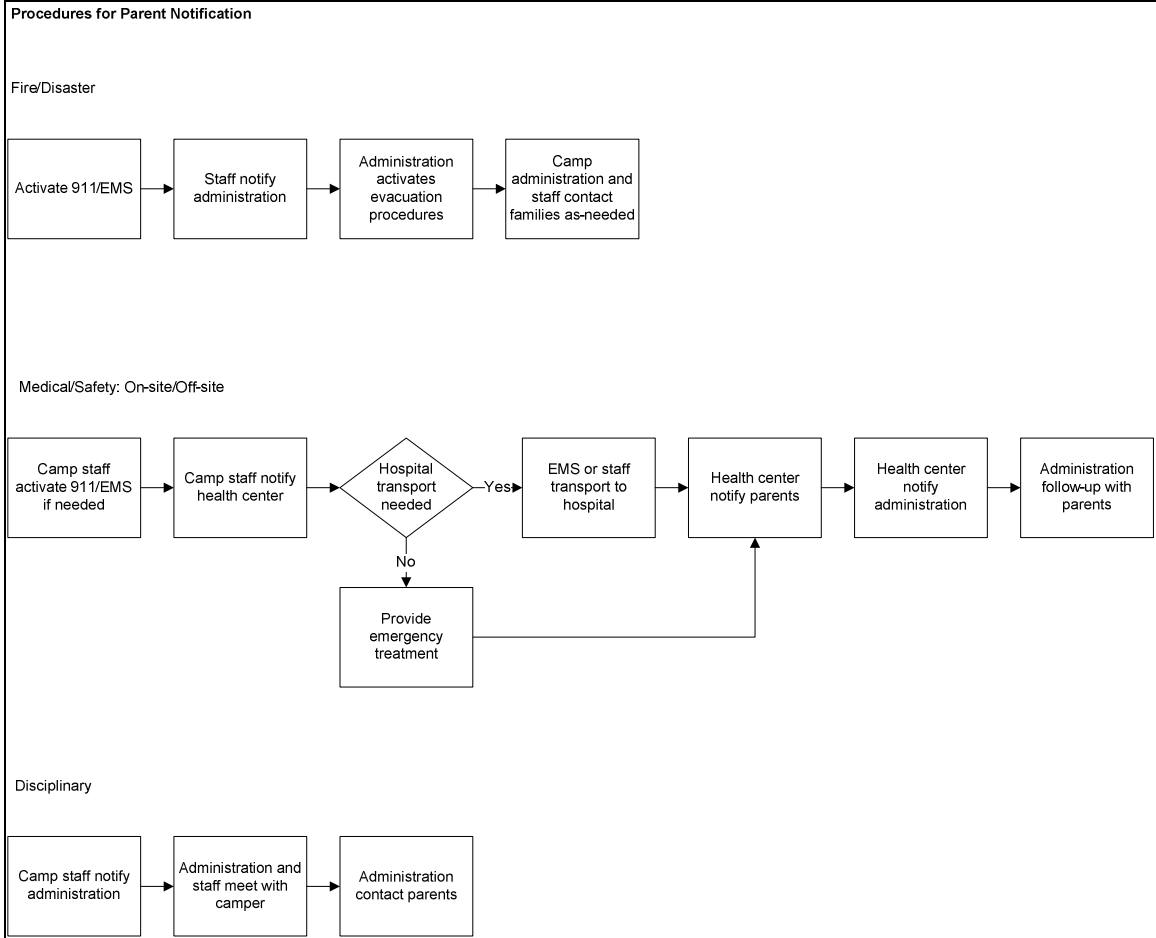
Parents may request copies of health care and discipline policies, as well as our forms for filing a grievance against the staff or administration of Camp Bauercrest. All inquiries and grievances will be reviewed by the Camp Director in conjunction with the Camp Bauercrest Board of Directors.

III. EMERGENCY CONTACT NOTIFICATION

Fire and emergency evacuation procedures are reviewed and tested with campers and staff at the beginning of each session. In the event that the camp must be evacuated for any emergency, Camp Bauercrest staff/administration will immediately notify families and designated family emergency contacts.

In the event of any local/Federal disaster or emergency, the camp will be notified by alarm and the local EMS. Evacuation and transportation plans are in place with our transportation provider. In an emergency, Camp Bauercrest staff/administration will immediately notify families and designated family emergency contacts of the event and the appropriate pick-up location for their child.

The diagrams below display the processes in place for any event requiring parent notification.



IV. Bauercrest Camp Life and Programming

A. Age Groups and Bunk Assignments

After initial camp registration, additional forms for medical information, activities, community handbook, and bunk requests are sent to families. This information is announced and posted for parents after the first of the year, and into the early spring months.

Group and bunk placements are determined by grade. New campers are not in a separate bunk, as we honor bunk requests and do our best to integrate campers in terms of years at camp and geographic dispersion whenever possible. We guarantee meeting at least one bunkmate request for every family. We do not intentionally separate campers unless a separation is requested or required.

Age group assignments are determined as follows:

Grade Entering	Group
4th or below	Freshmen
5th	Sophomore B
6th	Sophomore A
7th	Junior B
8th	Junior A
9th	Senior
10th	Waiter
11th	CI (Counselor Intern)

B. Specialty Programs and Eligibility

Camp Bauercrest offers a wide variety of athletic and non-athletic specialty programs. The table below provides our most current listing of specialty programs. The table presents age requirements for eligibility to participate, swimming requirements to participate (if a waterfront program), and any associated fee to participate. Campers have the opportunity to sign-up for a given elective/specialty program at the beginning of each week (usually Sunday nights), noting a 1st, 2nd, and 3rd choice. If a camper does not receive his first elective choice in a given week, he will have the opportunity to participate in that 1st choice in the following week.

The Sports Conditioning and Model Rocketry/Inventions programs are additional programs offered at Bauercrest through outside providers. It is recommended that families interested in these programs enroll their sons before the camp session begins to allow for sufficient staffing and scheduling. Sign-up forms for these programs are available in the Camp Forms Packet.

Camp Bauercrest Specialty Program Eligibility and Fee Table

Program	Age/Group Minimum	Swimming Requirement	Additional Fee
Sports Conditioning	None	N/A	\$50/2 week cycle
Weight Room	Junior B – Entering 7 th Grade		
Sports Electives <ul style="list-style-type: none"> • Basketball • Baseball/Softball • Football • Soccer • Lacrosse • Volleyball/Newcomb • European Handball • Floor Hockey • Golf • Tennis 	None	N/A	None \$45 Fee for trips
Rowing/Sailing/Canoeing/Kayaking	None	Red Cross Level 3	None
Waterskiing/Wakeboard/Tubing	None	Red Cross Level 3	None
Swim Instruction (Required)	None	Assessment Required	None
Arts & Crafts	None	N/A	None
Project Adventure Low Ropes Challenge	None	N/A	None
Video	None	N/A	None
Digital Photography	None	N/A	None
Model Rocketry/Inventions	None	N/A	\$175/2wk cycle
Radio/Television	None	N/A	None
Music Room	None	N/A	None

C. Daily Schedule

Bauercrest offers a structured daily schedule consisting of about 7 scheduled periods per day - three in the morning and three in the afternoon and an evening activity after the post-dinner Free Play period. At least two of these periods are elective periods.

A copy of a sample daily schedule is below.

**Camp Bauercrest
Daily Schedule**

	Fresh/Soph B	Soph A	Junior B	Junior A	Seniors
7:30	Reveille/Group Leaders Meet in Head Bunk				
7:45					
8:00	Line-up/Flag Raising/Breakfast				
8:15					
8:30	Bunk Clean-Up/Inspection				
8:45					
9:00					
9:15	Group Meeting				Swim Inst
9:30	Choice	Choice	League		
9:45					
10:00					Choice
10:15					
10:30					
10:45	Sports Elec	Swim Inst	Choice	Choice	Group Meeting
11:00					League
11:15					
11:30					
11:45	Swim Inst	Sports Elec	Choice	Choice	
12:00					
12:15					
12:30	Return to Bunks/Wash-up for Lunch				
12:45					
1:00	Lunch				
1:15					
1:30	Rest Period				
1:45					
2:00					
2:15					
2:30	League		Swim Inst	Sports Elective	Choice
2:45					
3:00					
3:15					
3:30			Sports Elective	Swim Inst	League
3:45	Activity	Activity			
4:00					
4:15					
4:30					
4:45	General Swim				
5:00					
5:15					
5:30	Return to Bunks/Wash-up for Dinner				
5:45					
6:00	Line-up/Flag Lowering/Dinner				
6:15					
6:30	Free Play				
6:45					
7:00					
7:15					
7:30	Evening Activity				
7:45					
8:00					
8:15					
8:30					
8:45					
9:00	Return to Bunks/Prepare for Bed				
9:15					
9:30	Taps/All Overhead Lights Out				
9:45					
10:00					Walters in bunk

V. TECHNOLOGY POLICY

A. Goal

Bauercrest is an outdoor community where we surround our campers with their peers and incorporate activities to stretch physical, social, and creative skills. A primary goal of this experience is to establish new friendships, strengthen old bonds, and build community. With this goal in mind, we ask for your compliance and support in having your child enjoy a summer away from many of the devices, services, and tools that facilitate outside connectivity and distract from the social values of being at camp.

B. Restricted Items

Items that are not allowed at camp are any devices that can instant message, email, and send text messages, access the internet, or view movies or other displays. Such items include the following:

- Cell phones
- Video iPods or video MP3 players
- Televisions
- Blackberries/Trio's
- PDA's
- Video playing device (e.g., play station portable, DVD player, Gameboys, etc.).

Any device in violation of this policy will be confiscated and sent home immediately at the parents' expense.

Also note that any allowed items (e.g. radios, iPod/Shuffle, and CD/MP3 players) must remain in the bunks at all times unless otherwise directed by camp administration or staff for events such as bus trips or specific all-camp activities.

C. Consequences

If a camper is found with a prohibited electronic device during camp, the device will be immediately confiscated and mailed home at the parents' expense. Repercussions will follow that may include, but are not limited to, missing a trip day of the camp's choosing.

D. Camp Website

Bauercrest partners with Bunk1.com to provide such services as bunk notes, newsletter postings, and an online photo gallery. While bunk notes provide a means for parents to communicate with their children, the newsletter postings and photo gallery provide a glimpse into daily life and activities at camp. Photo gallery and newsletter services DO NOT ensure that parents will see their child's photo on the website daily or with any regularity. Nor do these services exist as a means for campers to send messages or an account of the day's events to their families. Counselors are assigned to take daily photographs, and the website will be updated a few times per week with the latest photos. Letter writing is the primary method for parents and campers to communicate; these other

services are a supplement and not a replacement for writing home.

VI. OFFICE HOURS AND CONTACT INFORMATION

A. Office Hours

The summer office will be open during the following times:

Daily - 9:00 AM to 5:00 PM

At all other times, a phone call may be answered by voicemail, which is checked quite often. Messages left in the evening will often times be retrieved the following morning.

B. Camp Contact Information

Mailing Address:

Camp Bauercrest
17 Old County Road
Amesbury, MA 01913
(Include bunk number on the camper letter)

Phone:

Office: (978) 388-4732
Fax: (978) 388-0303
Health Center: (978) 388-0089
Health Center Fax: (978) 388-3109

Email:

Administration@Bauercrest.org (administration name should be in subject heading)

Off Season Administration Contact Information:

- **Camp Director:** Rob Brockman, 20 Normandy Drive, Sudbury, MA 01776, (978) 443-0582, Rob@Bauercrest.org
- **President of the Board and Alumni Association:** Mark Smoller, 5 Cogswell Court, Needham, MA 02492 (617) 965-1830, Alumni@Bauercrest.org.
- **Director of Operations:** Henry Yaffa, P.O. Box 1924, Lowell, MA 01854 (978) 452-1023, Henry@Bauercrest.org

VII. CAMP DATES AND BUNK ASSIGNMENTS

A. 2010 Dates and Rates

Full-Season	\$6,300	Sunday, June 27 th – Sunday, August 22 nd
First Session	\$3,650	Sunday, June 27 th – Sunday, July 25 th
Second Session	\$3,650	Monday, July 26 th – Sunday, August 22 nd
Waiters, Full-Season	\$5,900	Friday, June 25 th – Sunday, August 22 nd
CI, Full-Season	\$5,700	Friday, June 25 th – Sunday, August 22 nd

Two-week Sessions – FOR 1ST TIME CAMPERS ONLY - \$2,450

1st Session: Sunday, June 27th – Sunday, July 11th

2nd Session: Sunday, July 11th – Sunday, July 25th

3rd Session: Monday, July 26th – Sunday, August 8th

Families whose accounts are paid in full, and have signed and submitted health forms will receive their son's bunk assignment as they enter camp. Parents who have not paid in full must stop in the Big House. Campers with incomplete health forms must report to the Health Center. No child will be enrolled without tuition paid in full (\$200 penalty after June 1) and completed health and general agreement forms. We need all health forms completed with immunization by May 7, 2010.

B. Arrival at Camp on Opening Day

Times are staggered to facilitate campers' arrival. The camp can only handle a certain number of cars on the hill at any one time. If your last names begins with A-G, please arrive at 8:00 AM, H-Q, please arrive at 9:30 AM and R-Z, please arrive at 11:00 AM on Sunday, June 27 and on Monday, July 26. No second month camper can arrive on Sunday July 25 because we are unable to handle the changeover at this time. Please do not ask.

Airport or Bus Transportation

Camp Bauercrest will coordinate and provide transportation to/from Logan Airport or Manchester Boston Regional Airport in Manchester, NH. Additionally, Bauercrest can provide transportation to/from the South Station Bus/Train Terminal in Boston or the Newburyport, MA Bus Terminal. If your son requires transportation to/ from any of these locations, please notify us of your arrival and departure times on the Bauercrest Transportation form found in our Camp Forms Packet. To arrange a single pickup or drop off we charge a fee of \$50. Parents are responsible for ensuring their child meets all security requirements imposed by the airlines and airports. Please ensure that arrangements are made with the airlines for children traveling alone.

To facilitate our pick-up/drop-off schedules, we recommended arrival/departure times are given below:

Arrival: Between 8:30AM-10:30AM on 6/27 and 7/26

Departure: Between 10:00AM-12:00PM on 7/25 and 8/22

In the event that there is a flight delay, cancellation, or change to airline or flight schedule, parents must call the camp front office directly at (978) 388-4732.

Parents will be contacted directly by a camp representative confirming completion of drop-off and/or pickup. Camp administration will notify the family by phone if there is a transportation delay, cancellation, or any other change in travel plans impacting camper travel from the terminal to camp or from camp to the terminal. The camp will also send email communication in those cases when the time-frame for commencing travel is greater than 24 hours.

Changes to Drop-Off/Pick-Up Schedule

Family Communication to Camp

If a family cannot drop off or pick up their son at the designated time, they should call the camp directly at (978) 388-4732 to make other arrangements.

Camp Communication to Families

If, for any reason, there is a change to the posted drop-off/pick-up schedule from the camp, the camp will send a camp-wide electronic communication when notice of at least 24 hours is available. The camp will contact all families by phone if the notification time-frame is less than 24 hours.

No-Shows/Absentees

Campers who are registered for a session at Camp Bauercrest are expected to arrive within the designated time frames specified in the Community Handbook. Calls will be made to parents/guardians and/or emergency contacts to determine if/when absent campers will be brought to camp. No refunds will be given if camp is not notified in time to fill the slot with a camper on the waiting list – generally within 24 hours of the designated start time.

C. Opening Day for Counselor Interns (CI's) and Waiters Friday June 25, 2010

CI's and Waiters are expected to show up two days before campers to receive additional training. They should arrive between 10 AM and Noon on Friday, June 25. **CI's will not be allowed to have or drive a vehicle on campus.**

D. Bunk Assignments

We do our best to honor at least one bunk placement request for each camper. However, in isolated circumstances, it may be impossible to do so. Decisions are based on many criteria, and often the process is very complicated. Bunks should reflect a good balance of children. Many campers from the same community want to have 5 or 6 friends from home in their bunk. Such a setting is not conducive to making new friends, which is part of the fun of being at camp. Therefore, while your child will likely have a few friends from home in his bunk, we try to make the bunks diverse to encourage new friendships and ensure that all campers have a good time. **There will be no switching bunks on opening day. Please do not ask.**

We cannot guarantee that a camper will receive a bunk bed or single bed. Unless there is an unusual circumstance, our counselors will generally pre-assign the beds. Older campers should all expect to have a bunk bed as this layout provides older campers with more space to move around the bunk.

VIII. VISITING POLICY

A. Parent Visitation

The camp has adopted a firm policy on parent visitation. **Family and friends are allowed to visit on Visiting Day only.**

B. Visiting Day (Sunday July 25, 2010)

Visiting Day will officially start at 10:00 AM and end at 5:00 PM. We understand that several families wish to arrive at camp before this start time. However, it is necessary to allow sufficient time for our first session families to pack their vehicles and depart camp safely and orderly. Therefore, we ask that all parents arriving for Visiting Day before 10:00am check in at the Big House. Our office staff will page your son(s) to the Big House to meet you. Campers can leave on Visiting Day and most campers and parents choose to spend the day outside of camp. Please sign out with your child's bunk counselors.

As Visiting Day is the day that 1st session and some 2-week session campers go home, counselors and cleaning staff will also be working to prepare for new camper arrival the next day. For these reasons, we ask that parents arriving for visiting day not enter the bunks until the afternoon of Visiting Day.

While all campers are allowed to leave camp that day, families are certainly welcome to remain in camp so that they may see/experience some of what their son(s) have accomplished during the weeks at camp.

There will be an all-camp activity or trip that evening so all campers must be back by 5:00 PM. Please plan accordingly as extensions cannot be granted. It is very disruptive to the evening's programming if campers do not return on time and your son may not be able to participate. Please leave plenty of time for your return trip to the Camp as traffic on a Sunday afternoon can be heavy.

We also recognize that some families have conflicts with other camps' Visiting Days. In that case, we urge you to call the camp at least two weeks prior to discuss possible alternatives. Again, Visiting Day is only for full season campers as first session campers leave Sunday morning. **All second month campers should report on Monday, July 26th.**

C. Leaving Camp (other than Visiting Day)

Parents have entrusted us with their most precious possession – their children. We must do all we can to provide them the best care while they are our responsibility. Therefore, the following guidelines are intended to avoid any problems on visiting days, incoming or outgoing days:

1. All campers are to be released only to an authorized person. Parents/guardians must complete and sign the Emergency Contact Form authorizing release of the camper to anyone other than the custodial parent or legal guardian. Identification will be required for release of campers to authorized persons.
2. Authorized persons are to be directed to the camp director or designated administrator to sign their camper out.
3. If a custodial parent requests that a camper not be signed out to a non-custodial parent, such a request must be in writing.
4. When a last-minute change occurs in who will be picking up a camper, the new instructions are to be verified with the camp director from an authorized person.
5. No camper may leave camp at any time without prior authorization from the custodial parent and the camp director.

The nature of overnight camp is that a camper's coming and going is disruptive to the program; it is also a contradiction to the nature of "going away" to camp. Therefore, the camp has adopted the following policy: Campers can only leave for special, one-time events such as weddings, little league championships or mandatory school obligations. A camper cannot leave for summer leagues or any sort of regular program. Attending camp is a choice campers make, and they need to choose between attending camp or another program. Leaving camp is an exceptional situation, and should be treated as such. **It cannot be a regular event and cannot take place during Color War.**

For the safety of your son and all campers, visitors cannot drive down the hill. The lower campus is, at all regular times, closed to vehicular traffic. **All visitors should proceed directly to Big House upon entering the camp.** All requests to leave must be in writing and approved by the camp director only. Lastly, only someone approved by the camper's guardian (specified on the pre-camp form) may sign out a camper. If parents want someone (e.g., because of schedule conflicts) not specified on the pre-camp form to pick up their child, a request must be submitted in writing to the camp director and named individual(s) must show proper identification upon arrival at camp.

IX. CLOSING DAY AND GRATUITIES

A. Closing Day

We stagger the pick-up times (and reverse them, out of fairness, from Opening Day) to minimize the rush on camp. When people show up early, the entire process becomes prolonged as the Camp can only handle a certain amount of automobiles on the hill. Please be respectful of the designated times. If your last name begins from R to Z, please arrive at 8:00 AM, H to Q, please arrive at 8:45 AM, A to G, please arrive at 9:30 AM on Sunday, July 25 and Sunday, August 22.

Parents will typically be notified ahead of time if it is necessary to settle any outstanding balances from the summer. If you have not been notified that you have a balance on your account, please proceed directly to your child's bunk. Please be sure to pick up all medications in the Health Center. Please plan to arrive at camp no later than 11:00 AM. No exceptions, please.

B. Gratuities

While we have no formal policy for tipping, it has been customary to tip each counselor in the bunk. The counselors work extremely hard to make your son's summer enjoyable. Tips are truly appreciated by the counselors. The norm is \$40 for one month campers (\$20 for two-week campers, \$80 for full season campers). Parents wishing to tip should do so on the last day. On occasion, a counselor will need to leave early to return to college. Parents are encouraged to leave their tips with another counselor in the bunk. Envelopes can be requested from the other counselors for your convenience.

X. BUNK LIFE

A. Supplement Bunk Account and Personal Money

Bunk account money is extra camper spending money left with the bunk counselor for trips and special events. **We recommend that parents budget \$60 for each month for**

campers, \$130/month for waiters and \$160/month for CI's. We cannot emphasize enough that money should not be left in the bunk and that we are not responsible for funds left with your child.

B. Discipline

It is the goal of Camp Bauercrest to ensure the safety of all campers and protect the spirit of the community we live in. The camp has a very clear distinction between rights and privileges. **We shall have absolutely no tolerance for severe infractions. The following list includes some, but not all, actions that constitute grounds for disciplinary action up to and including expulsion:**

- Bringing a weapon to camp
- Fighting with a staff member or harming or abusing another camper
- Stealing or damaging the camp's or someone else's property
- Writing graffiti or engraving of any kind
- Violating safety procedures
- Possessing drugs, drug paraphernalia, cigarettes, alcohol, or cigars
- Smoking
- Leaving the bunk at night without permission
- Possessing fireworks, lighters, and matches
- Consistently failing to abide by camp rules and regulations
- **AN EXPULSION FOR DISCIPLINARY REASONS WILL RESULT IN NO REFUND OF ANY PAID TUITION.**

XI. OTHER CAMP SERVICES

A. Bar Mitzvah and Academic Tutoring

Subject to the availability of tutors, Bar Mitzvah and Academic tutoring will be available for \$45 an hour. These services will be billed with payments to be made at Visiting Day or pick-up day. Checks should be made out to your son's tutor. Families should contact Director of Operations Henry Yaffa (Henry@Bauercrest.org) before June 1st for procuring any tutoring services. We will review any prescribed education plan or parental request in order to assign an appropriate tutor. The assigned tutor will produce the tutoring schedule.

B. Laundry

Laundry is sent out weekly. Each camper's clothes are sent to the laundry in a separate bag and the laundry is returned no more than three days later. Campers create an inventory list of all items they send. Please pack for a minimum of 14 days (from the beginning of camp until the first laundry is returned). **Label your child's apparel clearly with a permanent marker or labels.** Lost and Found is a major issue at Camp. We do all we can to ensure that your son does not lose his clothing, however your son must take some responsibility for his belongings regardless of his age.

XII. PERSONAL ITEMS AND AREAS

A. Electronics

Some campers bring a small radio/non-video display MP3 player, reading light or electric fan. We consider any other AC electric item beyond these items (except for medical items) to be extras. Every camper is allotted three outlets (we will provide power strips). **Refrigerators, televisions, and heating or cooking devices will not be allowed under any circumstances.**

B. Other Personal Items

Campers may bring books, non-video display MP3 player, musical instruments, and other such personal items in line with the Technology Policy in Section IV (B). Because of the nature of camp, we cannot guarantee the safety of personal items. While missing items are often covered by family's homeowner insurance policy, Camp does not offer any coverage. Some families have the Boston Globe or Herald newspapers delivered. **Please be sure to tell the agent what bunk your child is in and please be certain that the billing is sent to you rather than the Camp. Campers are responsible for picking up the newspaper at the Big House.**

C. Furniture

Every camper will receive a working locker (with shelves and hanger area), bed, and cubby. Please bring your own hangers. You may choose to bring your own cubby as some find that the wooden cubbies provided by Camp do not have enough space. The cubby's dimensions should be no more than 3 feet tall and 2 feet wide and 1.5 foot deep. This size restriction will be strictly enforced. We recommend plastic three-drawer models (some even have wheels). On opening day, family members are given time to unpack and help prepare their child's area. No additional furniture is allowed.

XIII. FOOD

It is our camp's policy to provide hearty, nutritious meals. Campers will have the choice of whatever food is offered at any given meal. The only exception to this policy will be dietary requirements in writing from your child's physician.

A. Peanut-Free and Tree Nut-Free Policy

As in many educational settings today, there are a significant number of children coming to camp with severe food allergies. Given this determination, we feel it appropriate and

necessary to address the issue as it relates to food that is brought into the bunks and how it is prepared and served in our dining hall.

There will be no food allowed in camp that contains peanuts, tree nuts, or their by-products.

B. Mess Hall

It is our camp's policy to provide three hearty, nutritious meals daily. Our meals are served and prepared kosher-style. We recognize that every camper may not like every meal. To that end, alternatives are provided. Should your son have specific needs such as food allergies, glatt kosher, or a vegetarian diet, please be sure to address this with the administration prior to your son being dropped off, so that preparations can be made. Our menu follows all USDA nutritional standards. Milk is offered before campers go to bed.

C. Care Packages and Bunk Food

PERSONAL SNACK FOODS AND ANY FOOD PACKAGES ARRIVING AT CAMP AT ANY TIME ARE NOT ALLOWED.

This policy exists to further ensure bunk cleanliness and the general health of our campers - which is often compromised by the storage and consumption of these foods. All campers will be allowed to bring one case (24 bottles) of plastic sports drink or water to camp. No soda or aluminum cans are allowed.

Violation of this policy will result in confiscation of bunk food and possible disciplinary action.

D. Canteen

Each camper will have the opportunity to receive snack foods approximately three times per week. This cost is covered with tuition. Canteen also offers sundries and other items at an additional cost.

ALL CANTEEN AND SNACK FOOD MUST BE CONSUMED AND DISPOSED IN THE MESS HALL OR IN LOCATIONS DESIGNATED BY STAFF AND ADMINISTRATION. AT NO TIME IS CANTEEN OR SNACK FOOD TO BE TAKEN FROM THE MESS HALL. VIOLATION OF THIS POLICY WILL RESULT IN LOSS OF CANTEEN.

XIV. CAMPER HEALTH

A. Health Form

This form requires input from parents and physicians. Campers must have a full physical examination within 12 months of the start of camp. Health forms need to be signed by campers, parents and physicians. Insurance policy dictates, without exception, that the health form is fully completed for each child or counselor entering camp.

B. Pre-Camp Prevention and Notification

Please take care of any preventive needs before camp including dental work, as we want to avoid any disruptions. Notify the Executive Director if your child has been exposed to any contagious disease within three weeks of the start of camp. If your son is not feeling up to par on Opening Day, we recommend keeping him home until he feels better.

C. Preventative Health Care Procedures for Opening Day

If your child has been ill (sore throat, cough, fever of 100 degrees F) within 7 days of drop-off day, please do not bring your child to camp on opening day. We ask that you contact our offices at (978) 388-4732 so that we can discuss the best timing for a postponed arrival.

Upon their arrival at Bauercrest, families will be directed to designated locations for lice checks and temperature checks. Families will not be allowed to move their sons into the bunks until a health check clearance card is given to the bunk counselors. If a camper is found to have lice or to exhibit any of the symptoms mentioned above, the family will be instructed to bring their son home until proper treatment and remedy alleviate all symptoms - for a minimum of 7 days.

We recognize the additional time it will take for families to complete the move-in and check-in process, but we feel these additional measures are in the best interest of our entire camp community. We appreciate your patience and understanding.

D. Medications

To better serve our campers and ensure a more effective and efficient method for dispensing medication, Camp Bauercrest has entered a partnership with CVS/Pharmacy located in Amesbury, MA to implement a **mandatory** pre-packaged medication program for families bringing any medications to camp. There is no fee for pre-packaging your son's medications. Further, it is important to note that this pre-packaging program is in compliance with the Massachusetts state regulations regarding medication packaging for summer camps. If your child will not be requiring medications as of the time he will be arriving at camp, your compliance with this program and completion of the necessary forms described in this letter is not required.

Camp Bauercrest will now require camp families with medications to have all camper medication dispensed, pre-packaged and sent to camp prior to their arrival.

The Bauercrest health center staff will only dispense medication packaged by the CVS/Pharmacy in Amesbury. This medication includes:

- Prescription medications in pill form (daily or as needed);
- Prescription medications in liquid form (daily or as needed);
- Prescription inhalers, ointments, eye drops, and nose sprays; and
- Non-prescription medication such as vitamins and supplements.

Note that Bauercrest stocks most over the counter items such as Tylenol, Advil, Benadryl, etc.

The benefits to families are:

- No need to bring medications to camp or send them each month – they will be delivered directly to the camp;
- Minimization of waiting/registration lines in the Health Center on Opening Day;
- Physician Authorization forms will not need to be processed on opening day as prescriptions will have already been processed through CVS;
- Pre-packaging ensures accurate dispensing of medications; and
- More time for health care staff to focus on your child's direct care.

Parents are responsible to check that their child's prescriptions are written for exactly how and when the medication is to be given. The forms listed below are posted to the Bauercrest website at the following link: http://www.bauercrest.org/cp_forms.html.

- CVS document with answers to Frequently Asked Questions;
- CVS Patient Profile Form; and
- Camp Bauercrest Parent Authorization for Medication Administration Form. *It is important to note that an authorization form must be completed for each medication.*

D. Off-Site Access to Health Care and Off-Site Emergencies

D. Behavior, Special Needs and Modifications

Camp administration asks that parents be forthright in communicating any pre-existing behavior patterns their son may have which could potentially compromise the quality of camp life for their son and others. Such patterns observed by our staff during the camping season will be communicated to administration. As deemed necessary, administration will be in contact with families to report and discuss these observations.

The requirements for success at camp are similar to those at school. A family cannot expect a child to simply stop using medication that is considered necessary for school success when their child attends camp. The Bauercrest staff and campus are limited in their ability to meet the requirements of certain special needs children.

In accordance with the policies of The Americans with Disabilities Act, Camp Bauercrest makes readily achievable accommodations to assure that campers, and wherever possible, campers with disabilities have the opportunity for full participation in the camp experience. However, the communal nature of camp may limit our ability to meet the needs of all individuals.

E. Health Center

The Camp Bauercrest Health Center is open 24 hrs a day, with marked service hours for any regular treatment. The health center is equipped with ten beds and an isolation room. The phone number to the Health Center is (978) 388-0089.

F. Insurance

Every effort will be made to contact a parent or your insurance company before we service your child's health needs at any expense. The possibility exists that we will not be able to reach a camper's parent or personal physician. We will provide care for the camper in regard to safety and their well being. The parents will ultimately be responsible for all medical costs.

G. Health Care Staff

Our nurses are registered nurses. Our camp doctor visits camp three (3) times a week to check on the campers. The local hospital is Anna Jacques in Newburyport, MA.

H. Confidentiality

Any medical treatment or condition is on a need to know basis for staff. Please feel free to discuss any problems or concerns with our medical team.

I. Medical Records

Camper medical records are kept for a period of five years from the time they are delivered to the camp. Current season records and records going back one year are stored in the Health Center. Archived records are stored in the Camp Administration Building.

J. Over the Counter Medications

Over the counter medications are available at the Health Center. These include Tylenol, Advil, Sudafed, Robitussin, and Dimetapp. It is important that you include any allergies to prescriptions or over the counter medications on your son's health history form.

K. Dental and Orthodontic Care

Children's teeth should be cleaned and cared for by a dentist prior to entering camp. Our medical policy does not cover orthodontic or ordinary dental care. If your child's braces break or need any other attention, you will be called so arrangements can be made for you to pick him up, and take him to his own orthodontist.

L. Parent Notification of Injury/Illness to Child

Camp Bauercrest administration or designated staff will notify a parent or guardian of illness or injury to their child, where the child:

1. Is going to a hospital emergency room
2. Is showing visible signs of a psychological or psychiatric disorder, exhibited through perceived abnormal or inappropriate behavior
3. Has been or will be treated by the camp doctor or hospital physician for a diagnosed injury or illness requiring:
 - a. Surgery
 - b. Stitches
 - c. Bandaging for severe bleeding
 - d. Bandaging/casting for orthopedic treatment
 - e. Burn treatment
 - f. Attention to severe bruising
4. Will be staying in the infirmary overnight
5. Is running a temperature greater than 100 degrees for more than one day; or a fever that cannot be easily reduced with Tylenol, ibuprofen, or equivalent medication.
6. Has been harmed/injured physically or emotionally resulting from:
 - a. Severe verbal altercation
 - b. Fighting
 - c. Horseplay
 - d. Any in-camp or out of camp activity during the season
7. Is not eating properly or is showing signs of not eating properly, such as:
 - a. Significant weight gain/loss
 - b. Excessive vomiting
 - c. Signs of an eating disorder – related to psychological or psychiatric disorder
8. Is showing signs of disrupted sleeping patterns or a sleeping disorder

In the case of medical emergency, Bauercrest will act in the best interest of the camper to seek immediate medical care. As such, the Camp may first seek immediate treatment before contacting the family.

If a child will need to see a doctor in the case of a medical non-emergency, the Camp will first contact the family in order to provide the option for the family to have the camper seen by its family doctor. If the family determines that the child will be seen by its family doctor, the family will provide the means of transportation by having a parent, guardian, or other family-designated contact pick the child up at camp and bring him back to camp.

XV. DIRECTIONS

From Route 95 from the North or South

1. Exit 58B-Rt.110 West toward Amesbury (**not towards Salisbury**).
2. Go about 3 miles and note **the Boston Technology North** office park on your left
3. Go another ½ mile and **bear right at the island**.
4. Go straight for 250 yards and **take right** between stone pillars.

From Route 495 from the South

1. Exit 53 – Broad St./Merrimacport
2. Take **left off the exit**, go 6/10th of a mile and take **right on Rt. 110**
3. Go 1½ miles and take first left after passing the Merrimac Sport, Bait & Tackle sign – on your left.
4. Quickly (**15 ft.**) **take left** on Old County Rd.
5. Go 250 yards and **take right** between stone pillars.

From Route 93 from the North

1. Route 93 South
2. Take Route 213 (First Massachusetts exit) toward Methuen
3. **Stay left at the end** of Route 213 get on Route 495 North toward Salisbury
4. Take exit 53 – Broad Street/Merrimacport
5. **Take left off exit**, go 6/10th of a mile and take on Route 110
6. Go 1½ miles and take first left after passing the Merrimac Sport, Bait & Tackle sign – on your left.
7. **Quickly (15 ft.) take left** on Old County Rd.
8. Go 250 yards and **take right** between stone pillars.

Camp Phone: (978) 388-4732
Camp Address: Camp Bauercrest
17 Old County Road
Amesbury, MA 01913

XVI. CAMP BAUERCREST PACKING LIST

The list of clothing and accessories has been updated. The amount of underwear, socks, t-shirts and shorts have been increased based on parent's suggestions. However, if the lesser amounts have worked well for your child, do not feel obligated to send more than you have sent in the past. This is only a guide.

Bedding/Linen:

- Sheets—2 sets of cot or twin size
- Pillow & 2 pillowcases
- Sleeping bag and 1 blanket or
- 3 blankets (August can be cold)
- 8 towels (3 beach/ 5 bath)

Clothing:

- 14 underwear
- 14 socks
- 14 t-shirts
- 12 shorts
- 4 bathing suits
- 2 long pants
- 2 long sleeve shirts/ jersey
- 2 white collared shirts
- 3 sweatshirts and sweat pants
- 3 pair of pajamas (1 flannel)
- jacket
- rainwear
- bathrobe
- casual shoes
- 2 pair of sneakers
- beach shoes/flip-flops
- 2 baseball hats
- Cleats

Mandatory

- 4 Bauercrest T-shirts**
- Bauercrest Sweatshirt**

Miscellaneous:

- Toothbrush/toothpaste
- Soap/shampoo
- Hairbrush
- Small plastic cup for water
- Nail clipper
- Small bucket for shower supplies
- Laundry bag
- Shoe bag (holds misc. items)
- Stationary and Pre-stamped envelopes
- Pens
- Bug spray
- Sunblock or sunscreen
- Hand sanitizer

Other:

- Personal fan
- Clip light
- Baseball glove
- Tennis racket and balls
- Extra pair of glasses
- Flashlight
- Water bottle - for water only
- Hangers

Optional:

- Radio/non-video mp3 player
- Playing cards
- Small games
- Books
- Swim goggles
- Mouth guards (2 or 3)
- Aqua socks
- Musical instrument
- Hockey stick and helmet
- Golf clubs/ fishing rod
- Camera/film
- Hiking boots recommended
- Ping pong paddle and balls
- CD players/CDs

REMEMBER TO LABEL EVERYTHING (WE MEAN EVERYTHING!) WITH A PERMANENT MARKER!! ALSO DO NOT SEND EXPENSIVE CLOTHING. MOST CAMPERS BRING SIMPLE T-SHIRTS AND SHORTS.